

HOMEWORK 3

Homework 3

Yuji Shimojo

CMIS 320

Instructor: Denton Guy-Williams

June 7, 2015

HOMEWORK 3

Question

You are working for country club with thousands of members. You have been tasked with designing a database to keep track of the members and their guests.

The club keeps track of mail and telephone contact information, name and membership number. When a member joins the club they can become a social member with pool, racket ball and weight room privileges or golf member which includes all of the social member privileges plus access to the golf course.

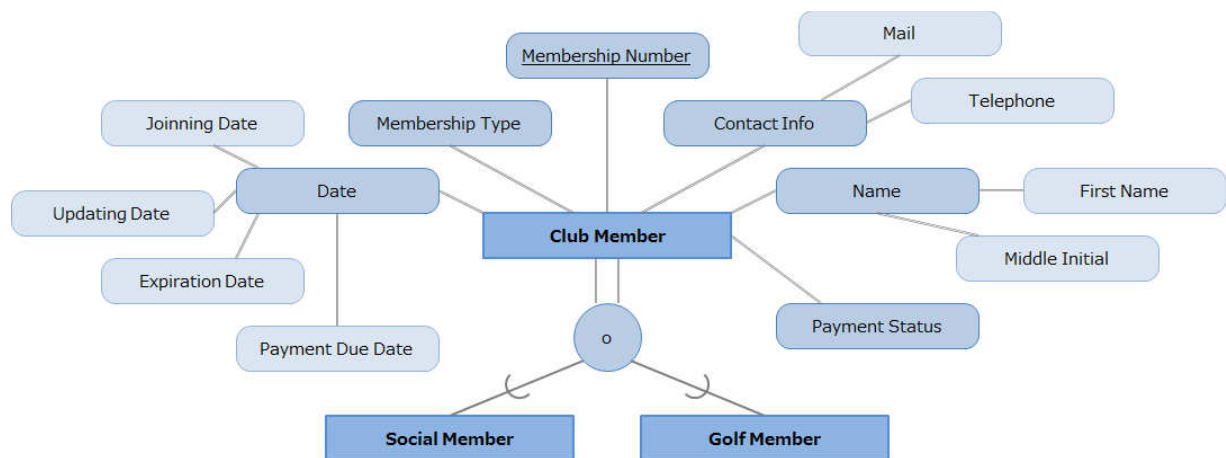
Develop, document and design an EER for this situation.

Submit your word document no later than the due date.

Enhanced Entity/Relationship Modeling

There is a superclass and are two subclasses as shown in Figure 1. The two subclasses, Social Member and Golf Member, are overlapping because a golf member also is a social member.

Figure 1



HOMEWORK 3

There are two entities, Club Member and Usage History, which are related as shown in Figure 2. Each Club Member may use one or more Usage Histories, and each Usage History is used by a Club Member.

Figure 2

